



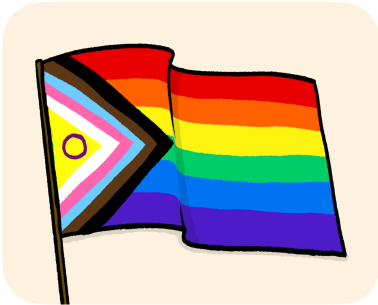
Easy
Read
Online

LGBTQIA+

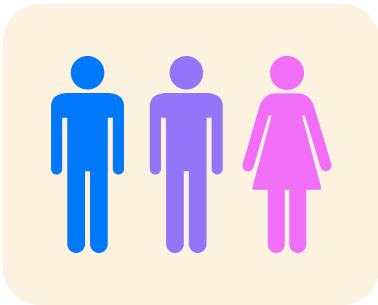
What do all the letters
mean?



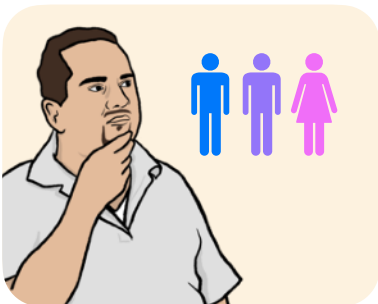
LGBTQIA+



LGBTQIA+ is used to describe people with different **genders** and **sexual orientations**.



Gender is whether you are male, female or use a different word. It might be different from the gender you were given when you were born.



Sexual orientation is who you are attracted to.



Each of the letters in **LGBTQIA+** stands for a different word.



This Easy Read information will tell about each word and what it means.

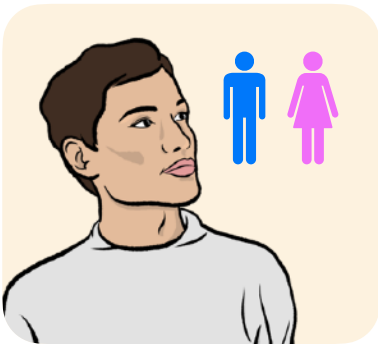
What do the letters mean?



L is for **Lesbian**, which means women who are attracted to women.



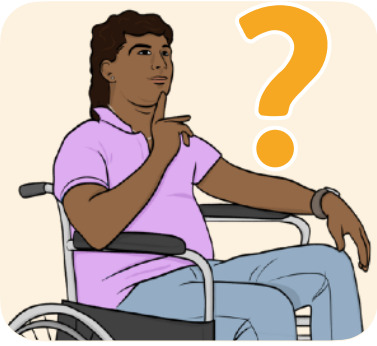
G is for **Gay**, which means men who are attracted to men. Gay can also be used to describe lesbians.



B is for **Bisexual**, which means people who are attracted to more than one gender.



T is for **Trans**, which means that the gender you were given as a baby is not the same gender that you feel yourself to be.



Q is for **Queer** or **Questioning**:



- **Queer** is used to describe anybody who isn't straight or **heterosexual**.



- **Heterosexual** means you are attracted to people who are the opposite gender as you.



- **Questioning** means you are still deciding how you would like to describe your gender or sexual orientation.



I is for **Intersex**, which means people who have both male and female parts of the body. They may be male, female or neither.



A is for **Ace**, which means you are not attracted to anyone, or if you are it happens only sometimes.



+ is for any other gender or sexual orientation that isn't on the list.